

## CONTACT DETAILS

34 Bay Tce Wynnum 4178

Phone: 3393 4176

Fax: 3393 5808

### Accommodation Support

Email: [robyn.saap@babi.org.au](mailto:robyn.saap@babi.org.au)

### Family Support

Email: [family@babi.org.au](mailto:family@babi.org.au)

### Youth Support Co-Ordinator

Email: [seniorysc@babi.org.au](mailto:seniorysc@babi.org.au)

### Youth Justice

Email: [justice@babi.org.au](mailto:justice@babi.org.au)

### Youth Development

Email: [youth@babi.org.au](mailto:youth@babi.org.au)

### Get Set For Work

Email: [training@babi.org.au](mailto:training@babi.org.au)

### Linx Youth Space

Email: [linx@babi.org.au](mailto:linx@babi.org.au)

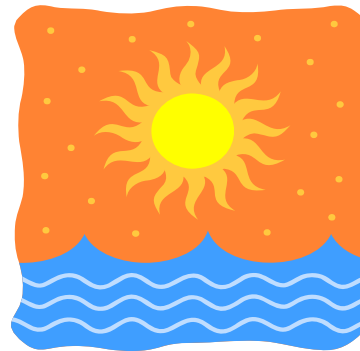
**ALL OF OUR SERVICES**

**ARE FREE**

## OTHER SERVICES INCLUDE

- √ Information and Referral
- √ Advocacy
- √ Family Mediation
- √ Teacher & Family Support
- √ Employment/Education
- √ Community Education
- √ Community Networking
- √ Recreational/Social Activities
- √ Early Intervention & Prevention Programs

### Supporting Young People in their Community



**BABI** is a deductible gift recipient and all donations over \$2 are tax deductible and greatly appreciated

**Celebrating 23 years  
1983 - 2006**



**BABI's MISSION**  
is to promote an environment in which young people can grow and participate successfully in the life of their Community

# Our Story

**BABI** was formed in May 1983 as a community response to the needs of teenagers from the Wynnum/Manly districts who were unable to live at home.

Since its early years, BABI's aim has been to provide safe, stable accommodation for youth within their own community, and assist young people and their families resolve their problems at home, thereby reducing the likelihood of homelessness and transience.

More recently, BABI has extended its range of accommodation options and services to include parenting programs, preventative programs for young people at risk of leaving school prematurely and/or at risk of offending and Get Set For Work Training Program, Linx Youth Space, and a Youth Support Coordinator Program in schools.

**BABI** is a community agency which has been incorporated under the Associations Incorporation Act. We receive most of our funding through the Department of Communities and Brisbane City Council and support through donations from the local community, corporate partners, sponsors, philanthropic organizations and various incidental grants.

Our primary objective is to provide a respectful, quality service. This is reflected in our practice, policies and procedures.

**BABI** services continue to evolve as it seeks to respond to the changing needs of young people in the local community.

## Our Services

### ACCOMMODATION

A range of medium to long term supported accommodation options are provided for young people (aged 16-21 years). There are also accommodation services for young parents and their children. Included in these services are opportunities for young people to develop their personal resources enabling them to function in their community with increased skills for living and greater independence.

Phone: 3393 4176

### LINX YOUTH SPACE

Youth drop-ins are on Monday - Wednesday-Friday from 3.30pm-6.00pm. For young people aged 12-25 years. Free access to computers, games, playstation, foosball, music/stereo, and arts resources.

### COUNSELLING

Counselling services are provided to young people (age 13-21 years) and their families with a focus upon resolving difficulties and preventing family breakdown.

Phone: 3393 4176

### YOUTH SUPPORT

This is a four worker program which provides: Information, Referral and Support for young people in the Wynnum/Redlands area who are at risk of homelessness and leaving school prematurely.

Phone: 3393 4176 or 3488 2533

### YOUTH JUSTICE

As a one worker program the focus is upon provision of responses to young people aged 10 -17 years in the Wynnum/Redlands communities who are at risk of engaging in criminal activity.

Phone: 3393 4176

### FAMILY SUPPORT

This is a one worker program which provides: Counselling, Parent Education, Referral and Support primarily to families with adolescents and young parents.

Phone: 3393 4176

### THE GET SET FOR WORK PROGRAM

The program offers a combination of:

social skills

literacy and numeracy training

Occupational and Vocational Skills training related to local employment opportunities

assistance in job search and employment preparation activities

job placement and post placement support